



filtration

**Technical
datasheet**

WED200 UF150

Hollow fiber ultrafiltration element for water and
wastewater applications

WED200 UF150

General Information

The WED200 UF150 ultrafiltration element is used for potable water production, RO pretreatment, municipal and industrial wastewater treatment. This element is designed for installation inside 8" pressure vessels in new or existing installations. These elements excel in rejecting turbidity, suspended solids, and virus and bacteria. They offer outstanding pH and chlorine resistance, excellent mechanical strength of the fibers, and improved fouling behaviour compared to existing ultrafiltration membranes.

Membrane characteristics

Membrane material	Modified PES
Membrane fiber inner diameter	0.8 mm (0.031")
Pore size	0.02 µm
Filtration mode	Inside-Out; Horizontal
Operation mode	Dead-end

Operating Conditions

Typical flux	50 – 100 l/m ² /h (30 – 60 gfd)
Backwash flux	100 – 250 l/m ² /h (60 - 150 gfd)
Max. system pressure	Refer to specifications of pressure vessel supplier
Max. filtration transmembrane pressure	1 bar (15 psi)
Max. backwash pressure	3 bar (44 psi)
Max. active chlorine concentration	500 ppm @ pH>10
Max. cumulative active chlorine exposure	250,000 ppm-hours @ pH>10
Max. particle size	200 µm
Max. TSS	100 ppm
Max. turbidity	50 NTU
Max. Temperature during operation & cleaning	40°C (104°F)
pH range during operation	2-12
pH range during cleaning	1-13

WED200 UF150

Module Specification

Materials of Construction

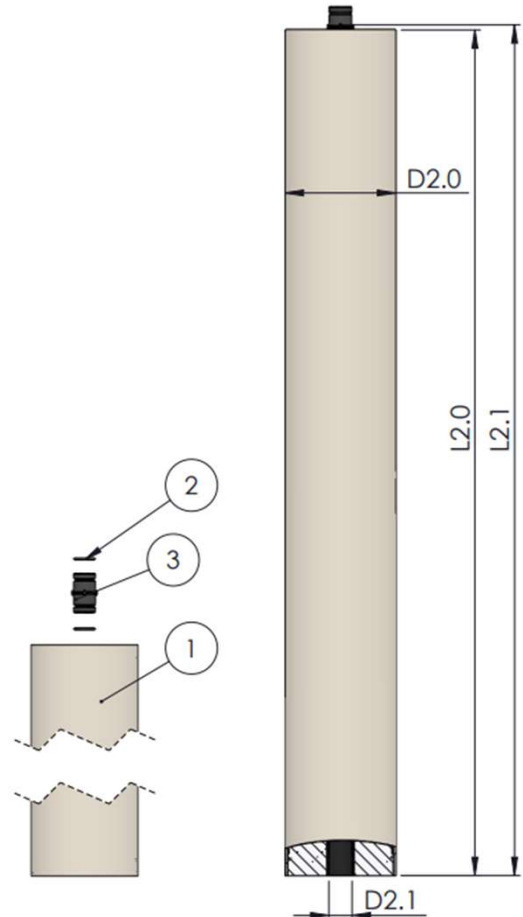
Housing	PVC-U
Internals	ABS, PP, PE
Potting	Epoxy resin

Dimensions

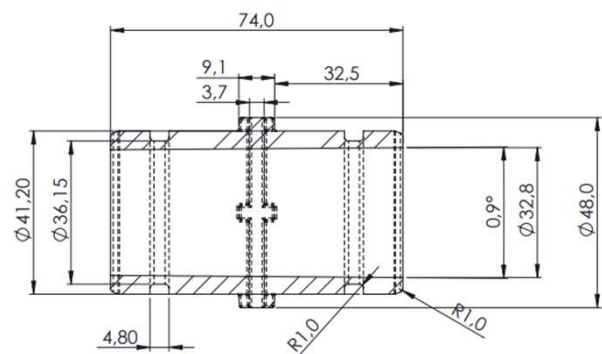
Membrane Surface Area	41 m ²
L2.0	1528 mm (60.16")
L2.1	1537 mm (60.52")
D2.0	200 mm (7.87")
D2.1	42 mm (1.65")

Assembly Components

(1)	WED200 UF150 Module
(2)	O-ring ISO3601 220 34.52x3.53
(3)	Permeate interconnector PVC-U



Permeate interconnector



Available Set (Components 1-3)

WED200 UF150 Set

Set-Code

SETUF0026

WED200 UF150

Storage Information

New modules in original packaging can be stored for max. 1 year from shipping date in a dry place, protected from sunlight or any heat source, at temperatures between 1 and 40°C (33 and 104°F);

Ex-factory storage solution: 84wt% water, 15wt% glycerin and 1wt% sodium metabisulfite;

Weight Information

Weight

Empty weight Module including assembly components	28 kg (62 lbs)
Filled Module including assembly components	57 kg (126 lbs)

Shipping Information

Each module is individually packed in a vacuum sealed plastic bag. For small quantities, modules and accessories are shipped in cardboard boxes:

- Shipping weight per module: 36 kg (79 lbs.);

For large shipments, modules are loaded in a wooden crate with a max. of 20 modules per crate:

- Crate dimensions: 100 x 125 x 173 cm; 40 x 50 x 68 in (L x W x H);
- Shipping weight per crate (20 modules): 660 kg (1455 lbs.)

Haaksbergerstraat 95 +31 (0)850 479 900
7554 PA Hengelo info@nxfiltration.com
The Netherlands www.nxfiltration.com

The statements, technical information and recommendations contained herein are believed to be accurate at the date of publication. Since the conditions and methods of use of the product and/or the information referred to herein are beyond our control, NX Filtration B.V. expressly disclaims any and all liability as to any results obtained from or arising out of any use of the product and/or reliance on such information. NO WARRANTIES OR GUARANTEES OF ANY KIND, EITHER EXPRESSED OR IMPLIED, INCLUDING BUT NOT LIMITED TO WARRANTIES OF MERCHANTABILITY, FITNESS FOR A PARTICULAR PURPOSE, OF TITLE, OF NONINFRINGEMENT OF THIRD-PARTY RIGHTS OR ANY OTHER WARRANTY ARE MADE CONCERNING THE PRODUCTS DESCRIBED AND/OR THE INFORMATION PROVIDED HEREIN.